



**HARIDHRA ENGINEERS**

**REPLACEMENT SPARE PARTS FOR**  
**COMPACT SPINNING SYSTEMS**



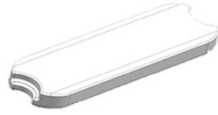
# Drafting Zone Spares



Jet Insert H1001



Insert Classic H1002



Insert Small H1003



Closing Nipple H1004



Intermediate Gear H1005



Cradle PK H1006



Cradle P3-1 H1007



Cradle HP GX H1008



Cradle HP H1009



Spacer NT 2.00  
lilac H1010



Spacer NT 2.5  
Green H1011



Spacer NT 2.75  
Rose H1012



Spacer NT 3.00  
Red H1013



Spacer NT 3.25  
Orange H1014



Spacer NT 3.5  
Brown H1015



Spacer NT 3.75  
Black H1016



Spacer NT 4.00  
Grey H1017



Spacer NT 4.5  
Beige H1018



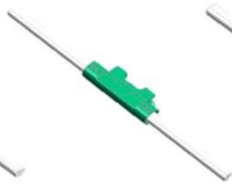
Spacer NT 5.00  
Yellow H1019



Pin NT -0.5  
Red H1020



Pin NT -0.25  
Orange H1021



Pin NT 0.00  
Green H1022



Pin NT +0.25  
Pink H1023



Pin NT +0.5  
Blue H1024

**HARIDHRA ENGINEERS**



Housing Eli-Top  
Flip Type  
H1025



Housing Eli-Top  
PK Top Arm  
H1026



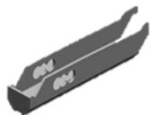
Housing Eli-Top  
Classic P3-1  
H1027



Flat Spring  
Suessen, Kttm Skf  
H1028



Spring Clip  
H1029



Distributor P3-1  
H1030



Take Up Universal  
H1031



Take up P3-1  
H1032



Saddle Spring  
H1033



Rubber Grommet 20.5  
H1034



Rubber Grommet  
KTTM H1035



Rubber Grommet  
LHS H1036



Rubber Grommet  
RHS H1037



Condenser E 3  
H1038



Cover Condenser  
H1039



Single Way condenser  
H1040



Suction Tube  
KTTM 47.5  
H1041



Suction Tube  
KTTM 47.5  
H1042



Suction Tube 105mm  
H1043



Pelican Head Red 10mm  
H1044



Pelican Head 8.5mm  
H1045



Nozzle End Piece  
H1046



Suction head 5.8mm  
H1047



Suction head  
6.3mm H1048

**HARIDHRA ENGINEERS**



Suessen & Kttm  
Top Rollers 17T  
H1049



Suessen & Kttm  
Top Rollers 22T  
H1050



Eli-Tube Lid R  
H1051



Eli-Tube Lid L  
H1052



Connecting Piece  
H1053

## Reinforcement Spares



Drive Shaft  
H1054



Shaft A  
H1055



Shaft BC  
H1056



Shaft D  
H1057



Shaft Z/S  
H1058

RHS



Intermediate Piece  
H1059

LHS



Intermediate Piece  
H1060



Spur Gear 25T  
H1061



Spur Gear 28T  
H1062



Helical Gear 26 T  
H1063



Shaft Coupling D  
H1064



Bellows only  
H1065



Coupling  
H1066



Helical Gear 115 T  
H1067



Toothed Belt Disc 40T  
H1068



Toothed Belt disc 28T  
H1069



Roller Disc  
H1070



Mag Feild Sensor  
H1071



Magnetic Ring  
H1072



Kit Shaft  
H1073

**HARIDHRA ENGINEERS**

# Bearing Unit Spare Parts



Bearing Unit RHS  
H1074



Bearing Unit LHS  
H1075



Drive Shaft 120mm  
H1076



Drive Shaft 132mm  
H1077



Roller Bearing  
22205E1



Helical Gear Z 25  
H1078



Helical Gear Z 28  
H1079



Needle Roller Bearing  
20/32x20-NKI 20/20  
H1080



Circlip DIN  
471-25x1.2  
H1081



Nylons Ring  
22205JV  
H1082



Washer 1 - 21.1x29.5x3  
H1083



Washer 2 - 20.1x24x3.5  
H1084



Washer 3 - 8.5x24x3  
H1085



Washer 4 - 24.4x31.8x1.25  
H1086



Washer 5  
25.1x29.5x7.5  
H1087



Counter Sunk Screw  
M8x20-8.8/ A2K  
H1088



Circlip DN  
472-52x2  
H1089



Locking Ring  
JV 32x1.2  
H1090



Conic Grease  
Nipple AM 6  
H1091



Leveling Bush  
H1092



A Shaft Fitting Gauge  
H1093



Cam Box  
H1094



Ventilator Fan  
H1095

# Basic Machine Spares



Peg Tray Pusher  
H1096



Rubber Grommet  
H1097



Lappet Holder 3 Type  
H1098



Suction Tube LRJ9  
H1099



Murata Bottom Peg  
H1100



KTTM Bottom Peg  
H1101



LMW Bottom Peg  
H1102



Reiter Bottom Peg  
H1103



Separator Long  
H1104



Separator Short  
H1105



Reiter Separator  
H1106



Spindle Break LMW  
H1107



Spindle Break Reiter  
H1108



Clamping Crown  
H1109



Lappet Hook  
H1110



Lappet Complete  
H1111



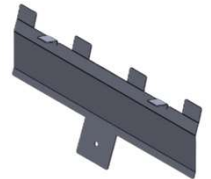
Roller Stand Setting Gauge  
H1112



Roller Beam Gauge  
H1113



Top Arm Pin Setting Gauge  
H1114



Condenser Setting Gauge  
H1115

**HARIDHRA ENGINEERS**

# Bellows for Smart Flex Coupling

## Cost Saving up to 50%



- ❖ Normally the bellows & springs will be broken due to heavy compression or fatigue during running
- ❖ We can easily replace bellows and springs alone . No need to change top and bottom collars .
- ❖ We have developed Bellows and spring suitable for Smartflex coupling 25H7/25H7 for compact spinning
- ❖ Bellows and springs offered by us are being manufactured using special alloy steel and heat treated at par with original to ensure uniform and high hardness value

## *Intermediate gear*



- ❖ We are a company specializing in high precision and long life parts for textile industry.
- ❖ German made polymers are using for our intermediate gears and therefore we provide you with the unexceptionally level of quality .
- ❖ We can offer very attractive prices and short delivery time.
- ❖ Our broad experience in textile processes guarantees you permanent high quality and efficiency in your production

# LATTICE APRONS

Apron Density	Mesh No {Weft Density/inch	Mesh No (Mesh/cm <sup>2</sup> )	Range of Spinnable Yarn (Count)	Best Suitable Spinning yarn (Count)
A	150	3500	> 60	80-120
BA	145	3200	40-120	50-80
CA/B	140	3000	32-100	40-80
BC	140	3000	32-100	40-80
C	130	2500	10-80	30-60
CN	100/118	1500/2100	20-100	20-60
CD	100/118	1500/2100	20-100	20-60
D	60/70/80/90	500-1200	Wool	Wool

Lattice Apron Honey Comb



Lattice Apron Regular



Lattice Apron Black Line



Lattice Apron New Version



Grid Circle Suitable for Suessen Φ 36.3*25 mm (114*25).Sel. : 2 mm	Grid Circle Suitable for H-Fang II Φ 41.7*25 mm (131*25).Sel. : 1 mm
Grid Circle Suitable for Rieter Φ 30*25 mm (94.25*25).Sel : 2 mm.	Grid Circle Suitable for ToyotaRX 240 Φ 39.40*17 mm (124*17).Sel. : 1 mm
Grid Circle Suitable for Spinpack Φ 41.50 *18mm{130.30 *18}.Sel: 2mm	Grid Circle Suitable for ToyotaRX300 Φ 45.8*20 mm (144*20).Sel: 1 mm
Grid Circle Suitable for LRJ9 Φ 52.7 *18 mm{165.50 x 18}.	Grid Circle Suitable for Astrosun Φ 39.20*25 mm (123*25).Sel : 2 mm.
Grid Circle Suitable for H-Fang Φ 39.4*25 (124*25mm).	Grid Circle Suitable for Ariser. Φ 38.5*25 mm (121*25.Sel : 1 mm

## Drive Strengthening Kit Suitable for Lakshmi Ring Frame



Shaft Coupling



Spur Gear 28T



Spur Gear 25T



Bearing unit



Smart Flex Coupling



Base Plate H 1116



Drive Shaft



Inter mediate Piece  
RH



Inter mediate Piece  
LH

# Auto Doffer Spares



Yellow Gripper (New Type)  
Complete Assembly H1117



Yellow Gripper (Round Type)  
Complete Assembly H1118



Yellow Gripper (Old Type)  
Complete Assembly H1119



Yellow Gripper Assembly H1120



KTTM Grey "6" Gripper  
Complete Assembly  
H1121



KTTM Black "7" Gripper  
Complete Assembly  
H1122



Yellow Gripper HE New Type  
H1123



Yellow Gripper Old Type  
H1124



Yellow Gripper Round Type  
H1125



Yellow Gripper Toyota Type  
H1126



Yellow Gripper Toyota New Type  
H1127



Yellow Gripper "7"  
H1128



Grey Gripper "6"  
H1129



New Type Gripper Body  
H1130



old Type Gripper Body  
H1131



Toyota 70 mm Gripper Body H1132



Toyota Piston Spring H1133



Gripper Pallet H1134



70mm Toyota Pallet H1135



Gripper Diaphragm H1136



Toyota Gripper Diaphragm H1137



Piston for Gripper H1138



Toyota Piston for Gripper H1139



New Type 'O' Ring H1140



Old Type 'O' Ring H1141



Toyota Connecting Tube 'O'Ring H1142



Piston Spring H1143



Bottom Peg H1144



LR Bottom Peg H1145



Tapper Tip Bottom peg H1146



Bottom Peg 18 & 20DU H1147



Muratec Bottom Peg H1148



Gripper Membrane H1149  
Rubber Component



**KTTM Intermediate Peg 18 & 20  
Dui White Colour H1150**



**KTTM Intermediate Peg 18 & 20  
Dui Grey Colour H1151**



**Stud Dia 18 DUI - Red Colour  
H1152**



**Stud Dia 20DUI - BlueColour  
H1153**



**LR Inetermediate Peg H1154**



**Top Carrier RH H1155**



**Top Carrier LH H1156**



**Gripper Assembly H1157**



**Gripper Seal H1158**

## **HARIDHRA ENGINEERS**

**No.1-B,SRIDEVI NAGAR, GANAPATHY  
COIMBATORE-641006.**

**R.Gopal Rao. 95140 33699**

**R.Vani 9843254528**

**Office 9047444528**

**marketing@haridhraengineers.com**

**tech.haridhra@gmail.com**

**www.haridhraengineers.com**